



Welcome to the seventh issue of the Whangarei Hospital Redevelopment Newsletter.

Whangarei Hospital Redevelopment Stage 1 – A weather tight building

The building site has certainly been busy over the past month as work on the new MHIPU progresses.

Since the last newsletter:

- The building has been made water tight, allowing the lining of internal walls to commence, Wards A & B are complete and the elderly wing and front of house are 80% complete.
- The main retaining wall has also been finished.
- Block work and external plastering is complete for the child and youth wing.
- First fix of wiring services should be finished shortly.
- Gas, water, fire & sewer mains have been installed and connected.

- Masonry block work and weather board installation to the exterior of the building is complete.
- Aluminium joinery installation is 90% complete.
- Barge boards and soffit installation is underway.
- External scaffolding is progressively being removed.
- External secure blockwork walls constructed.
- Weekly site meetings, health and safety meetings and toolbox talks continue.

Upcoming milestones:

- Planting and landscaping
- Completion of internal linings installation
- Finishing works to inside of building will continue





Totara Timber re-used in Unit

The totara trees which were cut down to make way for the new MHIPU unit have been kiln dried and will be crafted into coffee tables for the new unit.

The tables will be used in client meeting and interview areas.



If you are interested in receiving Blueprint automatically by email, you can 'join the mailing list' by visiting the redevelopment website and filling in your details.



Current view from the dining room, looking out towards the elderly and general adult outdoor areas.

Landscaping has commenced

Landscaping works are now underway with Robinson Asphalts back on site clearing ground areas. Footings for seclusion & intensive care courtyards are about to be poured and boxing for footpaths in courtyards has commenced. Posts have been erected between Wards A & B for the shadesail to be installed, activity is changing daily on site!

Blessing and Opening Day planning

The Dawn Blessing and Opening Ceremony planning has commenced for Friday 7 October 2011. Planning is also underway for an **Open Day** for the public, including staff, providing the opportunity to look around the MHIPU prior to the migration of staff and patients into the new unit.

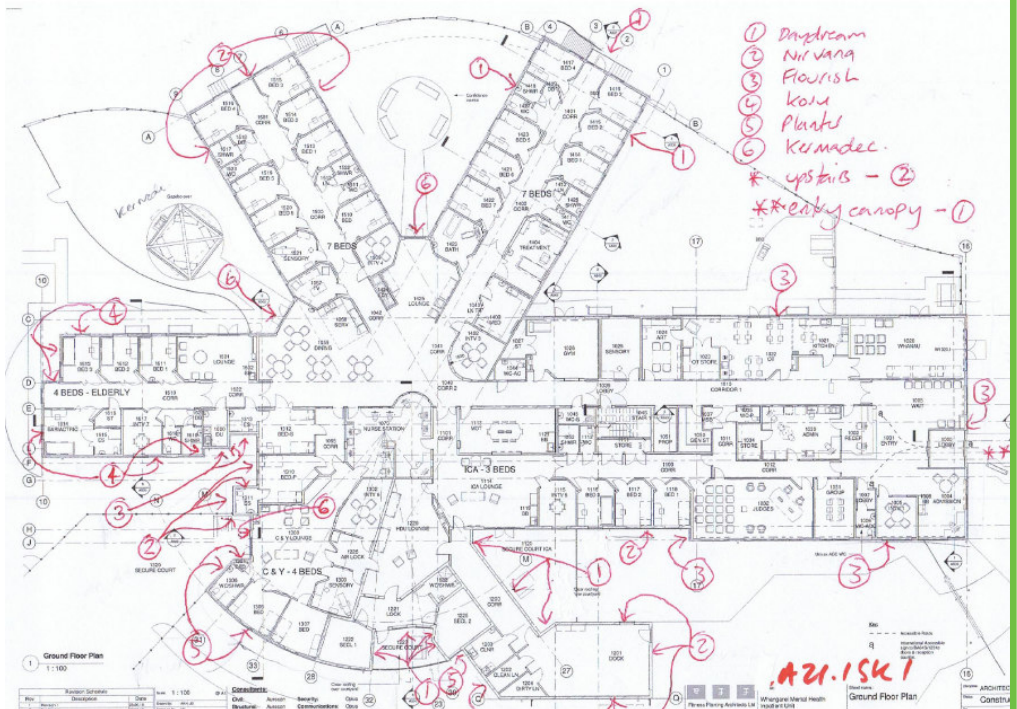
Exterior Colours for the MHIPU



External painting of the unit has begun!

The exterior of the building has now been primed and sealed, so from now on you will see the colour palette to the left incorporated onto the outside of the building.

So far Ward B and the secure dock area have been painted Resene 'Nirvana' and Resene 'Flourish' has been painted to the Judges room wall.



- ① Daydream
- ② Nirvana
- ③ Flourish
- ④ Koru
- ⑤ Planter
- ⑥ Keradec.
- * upstairs - ②
- ** entry canopy - ①

A21.1SK1