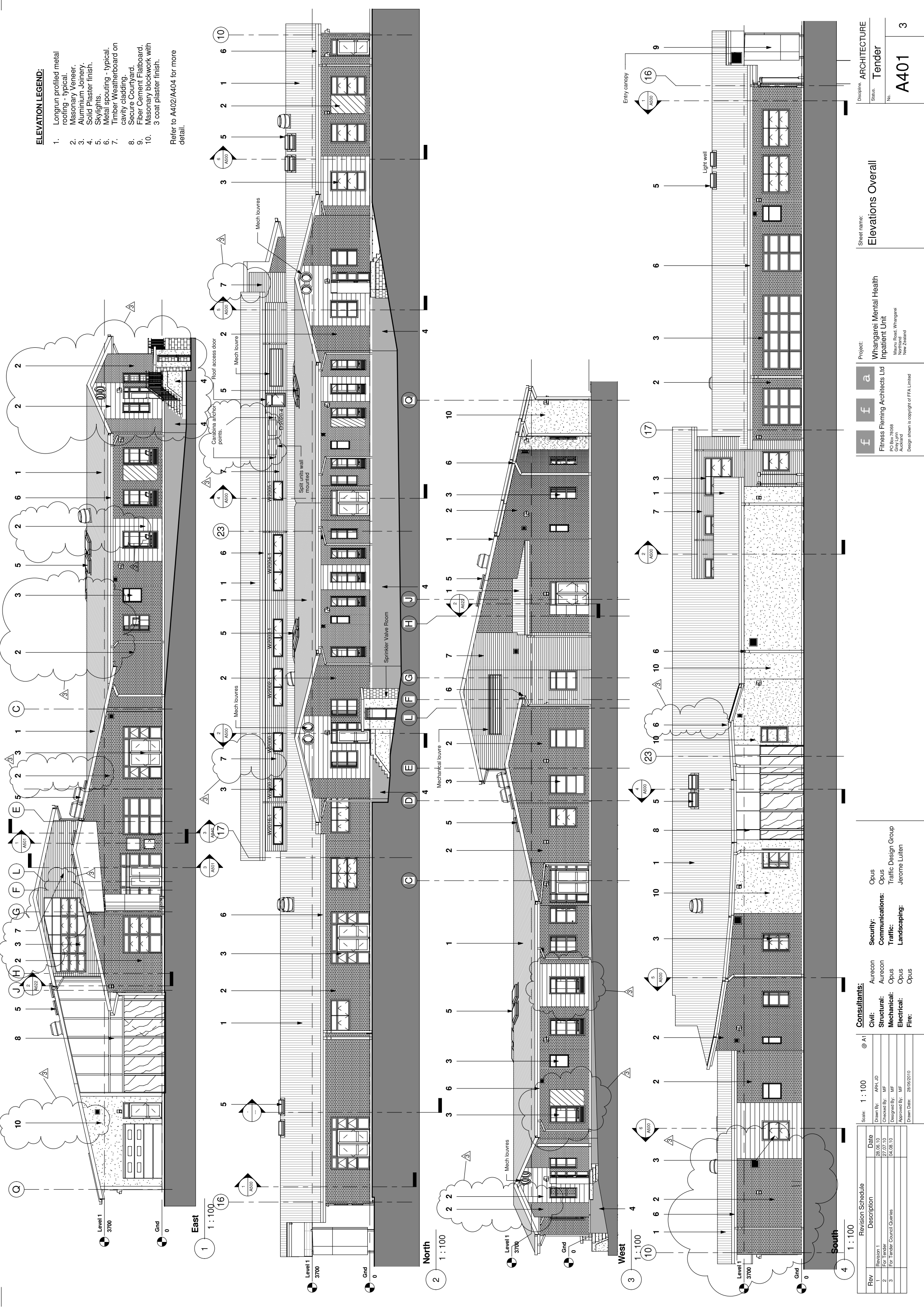


ELEVATION LEGEND:

1. Longrun profiled metal roofing - typical.
2. Masonry Veneer.
3. Aluminium Joinery.
4. Solid Plaster finish.
5. Skylights.
6. Metal spouting - typical.
7. Timber Weatherboard on cavity cladding.
8. Secure Courtyard.
9. Fiber Cement Flatboard.
10. Masonry blockwork with 3 coat plaster finish.

Refer to A402/A404 for more detail.



Rev	Description	Date
1	Revision 1	26.05.10
2	For Tender	27.07.10
3	For Tender Council Queries	04.08.10

Scale: 1 : 100 @ A1
 Drawn By: ARH_LJD
 Checked By: MF
 Designed By: MF
 Approved By: MF
 Drawn Date: 28.05.2010

Consultants:
 Civil: Aurecon
 Structural: Aurecon
 Mechanical: Opus
 Electrical: Opus
 Fire: Opus

Security: Opus
Communications: Opus
Traffic: Traffic Design Group
Landscaping: Jerome Luitan

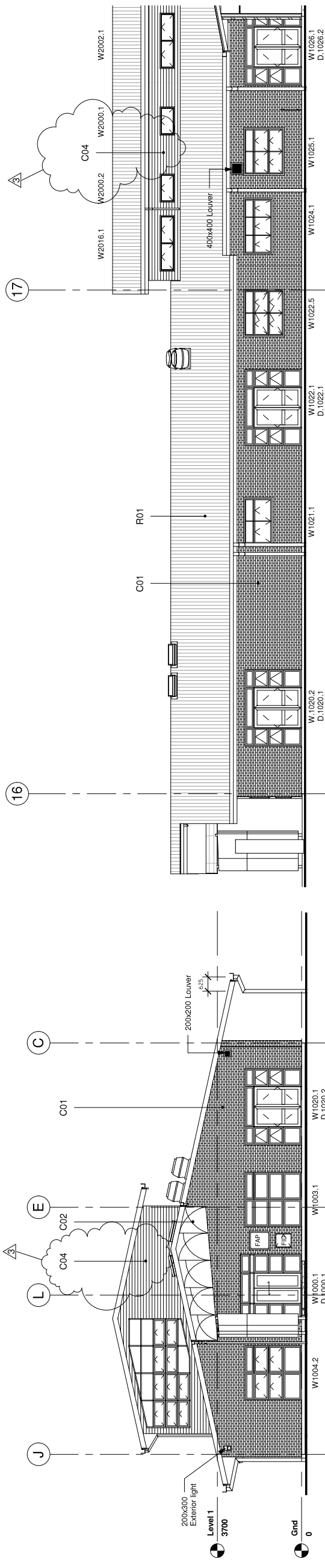
Project:
Whangarei Mental Health Inpatient Unit
 Maunu Road, Whangarei
 Northland
 New Zealand

Sheet name:
Elevations Overall

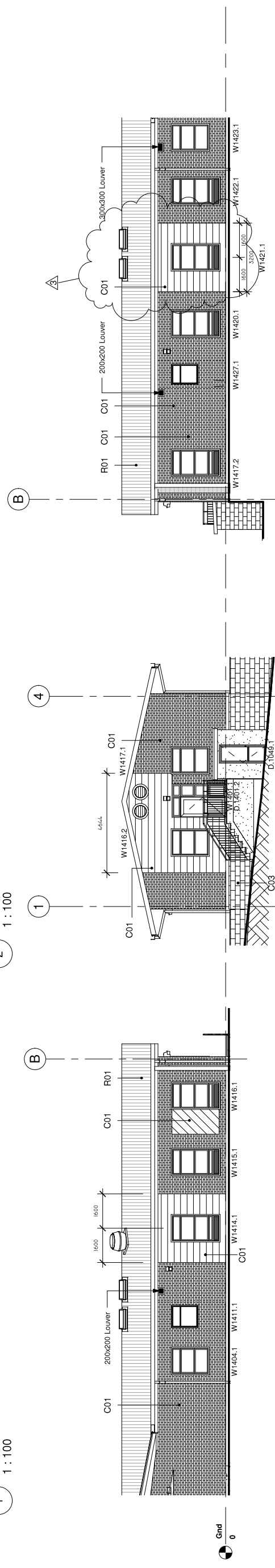
Discipline: ARCHITECTURE
 Status: Tender
 No. A401 3

ELEVATION LEGEND:

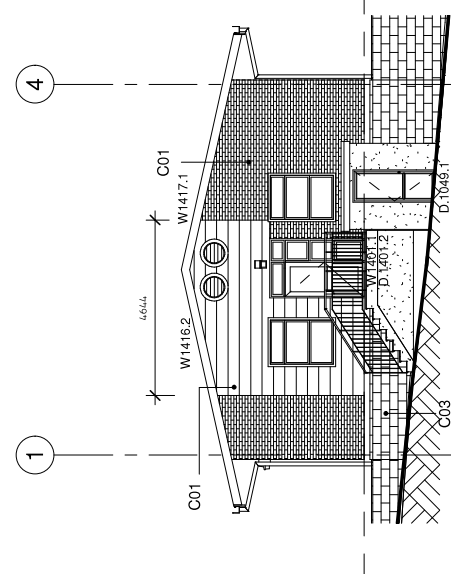
- C01 Selected masonry veneer cladding, installed to manufacturers specifications. Minimum veneer thickness 10mm. Requirements of NZS 4210 / NZS 2689.
- C02 Bagged, painted masonry veneer. 5% of veneer has random blocks recessed 10mm. 5% of veneer has random blocks expressed by 10mm.
- C03 Standard colour stack bond honed masonry veneer. Self finish.
- C04 Stack bonded coloured veneer. Self finish.
- R01 Veneered fibre cement board drained cavity system on timber frame. Acrylic paint finish.
- C02 Frith Hobblec or equivalent blockwork with specified plaster system finish.
- C03 Selected H 3.1 pre-primed timber bevel back weatherboard. Acrylic paint finish.
- R01 DIMOND dimonddek 630 (or equivalent approved) 0.55mm BMT coloursteel Endura profiled roofing.



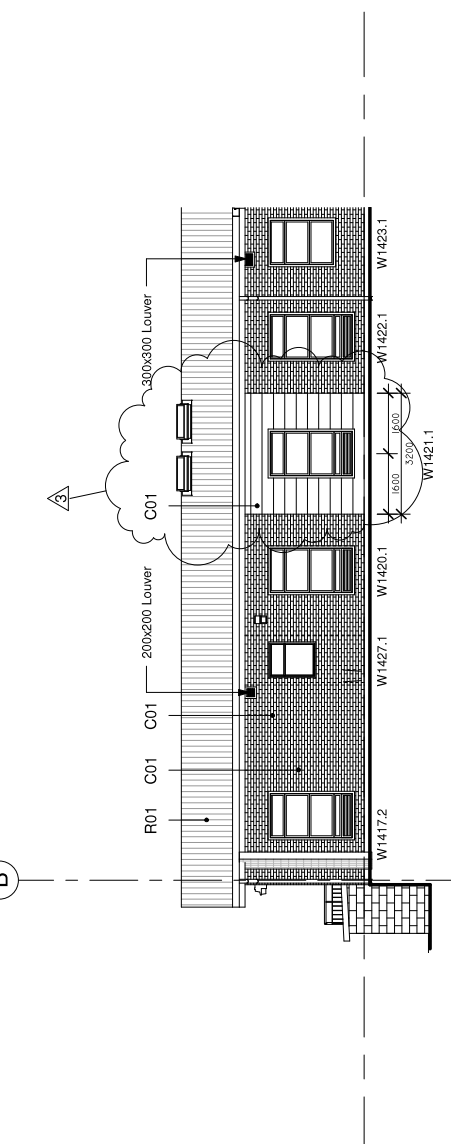
1 Main Entrance-Elevation
1 : 100



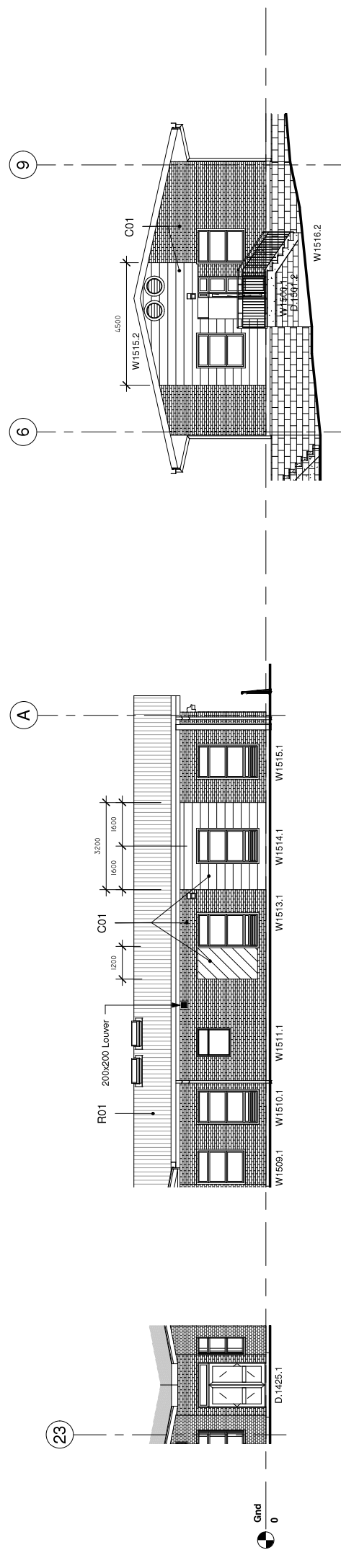
2 400-2 Elevation
1 : 100



4 400-4 Elevation
1 : 100



5 400-5 Elevation
1 : 100



6 400-6 Elevation
1 : 100

7 400-7 Elevation
1 : 100

8 400-8 Elevation
1 : 100

Rev	Revision Schedule	Description	Date
1	Revision 1		26.05.10
2	For Tender		27.07.10
3	For Tender Council Queries		04.08.10

Scale: As indicated @ A1
 Drawn By: ARH,JD
 Checked By: MF
 Designed By: MF
 Approved By: MF
 Drawn Date: 26.05.2010

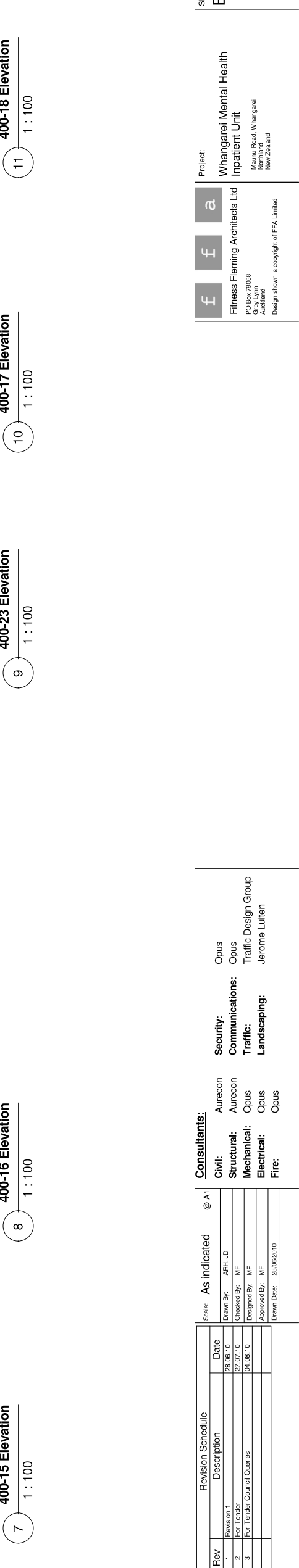
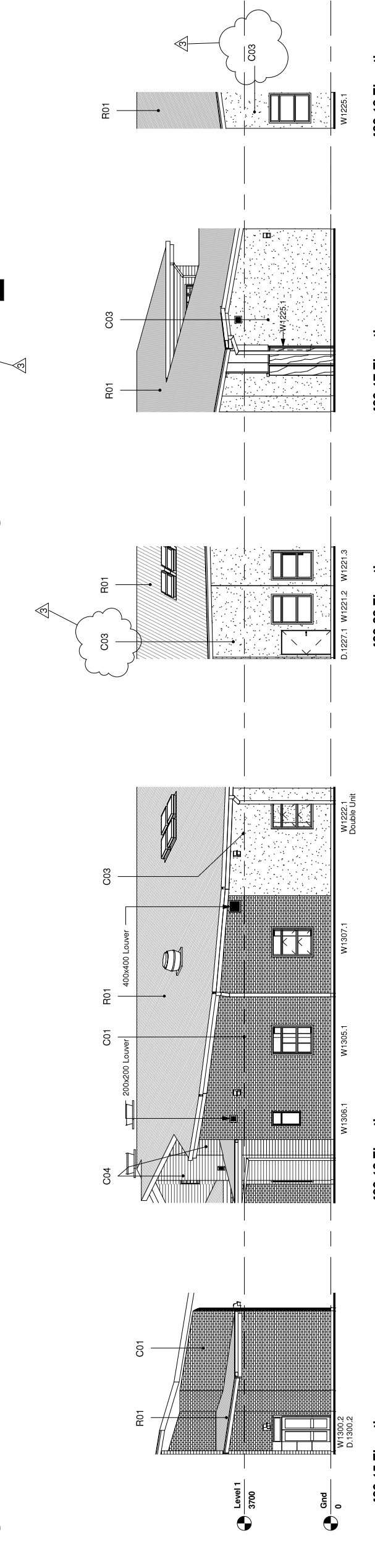
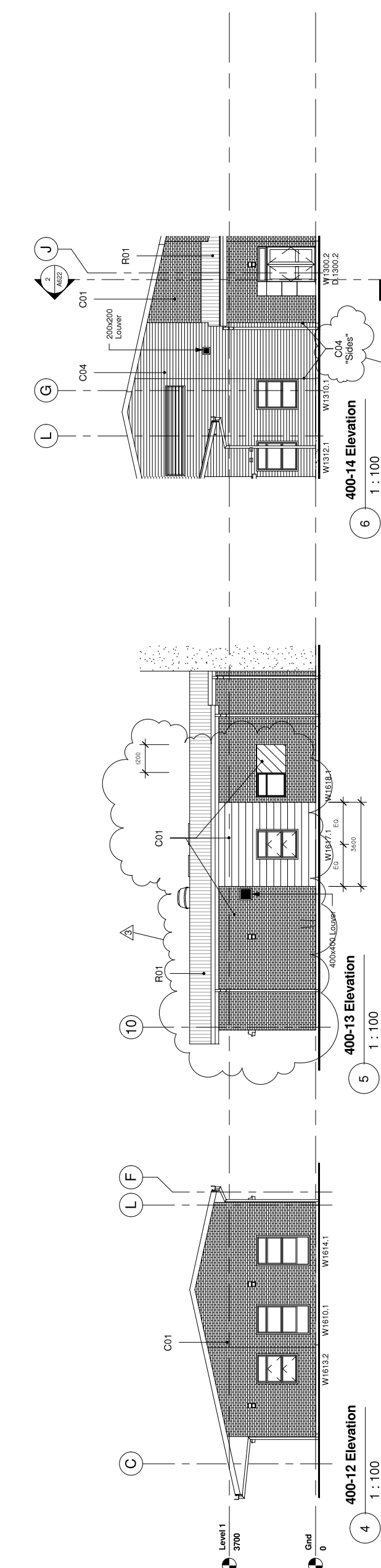
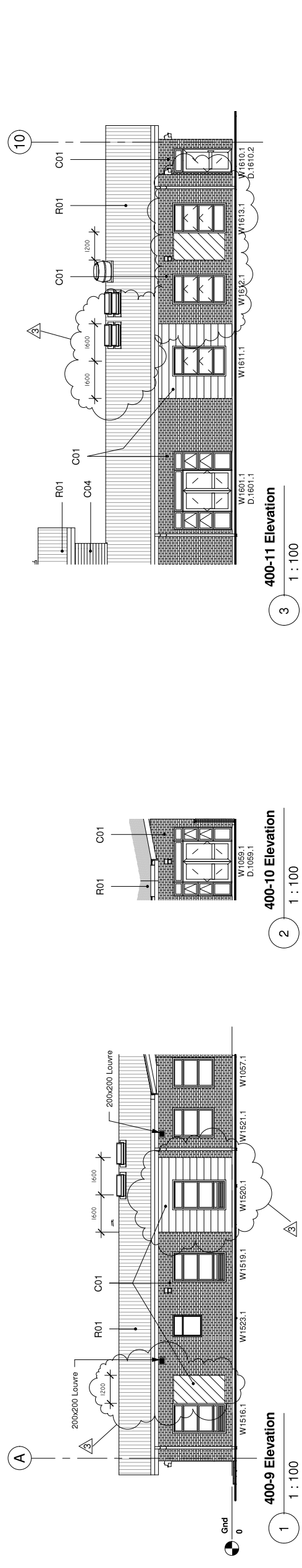
Consultants:
 Civil: Aurecon Opus
 Structural: Aurecon Opus
 Mechanical: Opus Traffic Design Group
 Electrical: Opus Jerome Luiten
 Fire: Opus
 Security: Opus
 Communications: Opus
 Traffic: Traffic Design Group
 Landscaping: Jerome Luiten

Project:
 Whangarei Mental Health
 Inpatient Unit
 Maunu Road, Whangarei
 Northland
 New Zealand

Discipline: ARCHITECTURE
 Status: Tender
 No. A402 3

ELEVATION LEGEND:

- C01 Selected masonry veneer cladding, installed to manufacturers specifications. Masonry veneer has a maximum weight per square metre of 100kg and must comply with requirements of NZS 4210 / NZS 2689.
- Bagged, painted masonry veneer. 5% of veneer has random blocks recessed 10mm. 5% of veneer has random blocks expressed by 10mm.
- Standard colour stack bond honed masonry veneer.
- Stack bonded coloured veneer. Self finish.
- Veneered fibre cement board drained cavity system on timber frame. Acrylic paint finish.
- Firth Hobbes or equivalent blockwork with specified plaster system finish.
- Selected H 3.1 pre-primed timber based back weatherboard. Acrylic paint finish.
- DIMOND diamondtek 620 (or equivalent approved) 1.055mm BMT coloursteel Endera profiled roofing.



Rev	Description	Date
1	Revision 1	28.05.10
2	For Tender	27.07.10
3	For Tender Council Queries	04.08.10

Scale:	As indicated	@ A1
Drawn By:	APH_JD	
Checked By:	MF	
Designed By:	MF	
Approved By:	MF	
Drawn Date:	28.05.2010	

Consultants:	As indicated	@ A1
Civil:	Aurecon	Opus
Structural:	Aurecon	Opus
Mechanical:	Opus	Traffic Design Group
Electrical:	Opus	Jerome Luiten
Fire:	Opus	

Security:	Opus
Communications:	Opus
Traffic:	Traffic Design Group
Landscaping:	Jerome Luiten

FF **f** **a**

Fitness Fleming Architects Ltd
PO Box 78088
Central Auckland
Design shown is copyright of FFA Limited

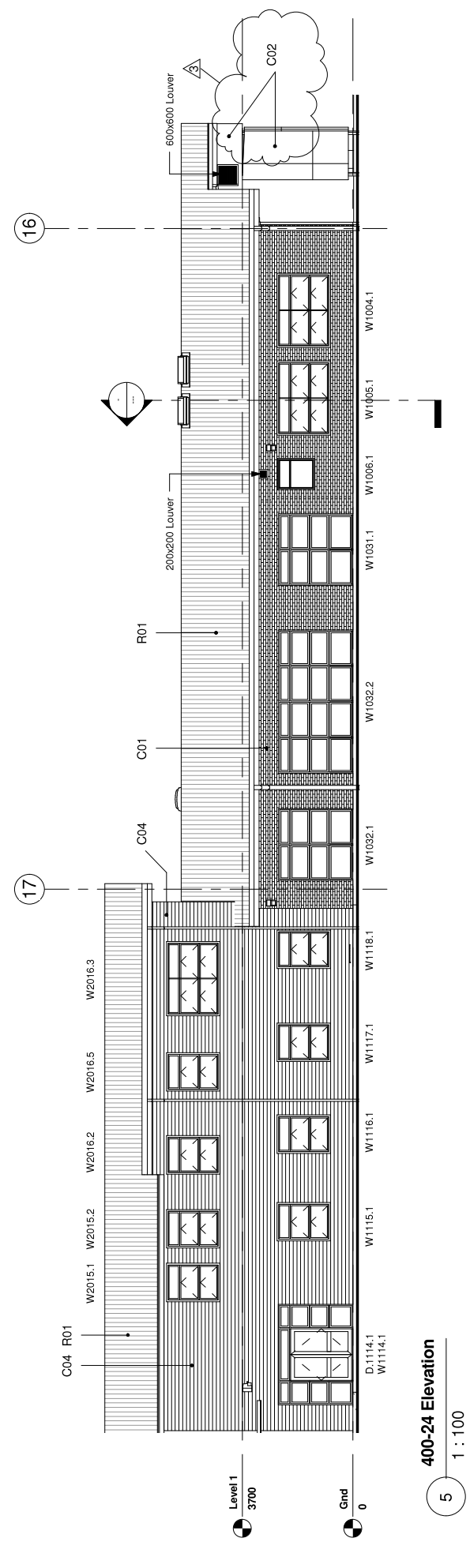
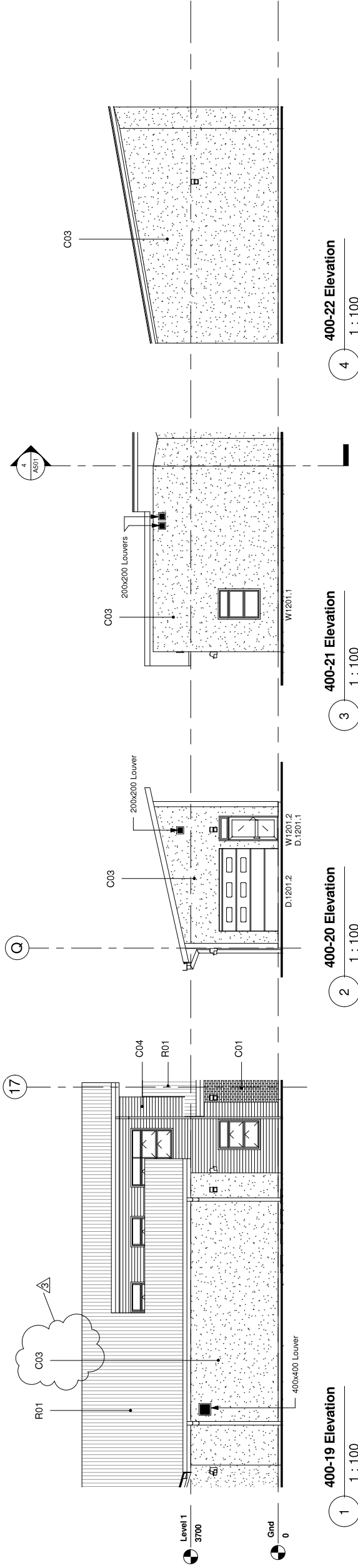
Project:
Whangarei Mental Health
Inpatient Unit
Maunu Road, Whangarei
Northland, New Zealand

Sheet name:
Elevations (2 of 3)

Discipline: ARCHITECTURE
Status: Tender
No.: A403 3

ELEVATION LEGEND:

- C01 Selected masonry veneer cladding, installed to manufacturers specifications. Masonry veneer has a minimum depth of 20mm and complies with the requirements of NZS 4210 / NZS 2689.
- C02 Bagged, painted masonry veneer. 5% of veneer has random blocks recessed 10mm. 5% of veneer has random blocks expressed by 10mm.
- C03 Standard colour stack bond honed masonry veneer. Self finish.
- C04 Stack bonded coloured veneer. Self finish.
- R01 Veneered fibre cement board drained cavity system on timber frame. Acrylic paint finish.
- C02 Firth Hobblec or equivalent blockwork with specified plaster system finish.
- C04 Selected H 3.1 fire-impregnated timber barge back weatherboard. Acrylic paint finish.
- R01 DIMOND diamondtek 620 (or equivalent approved) 1.055mm BMT coloursteel Endura profiled roofing.



Rev	Description	Date
1	Revision 1	28.05.10
2	For Tender	27.07.10
3	For Tender Council Queries	04.08.10

Scale:	As indicated	@ A1
Drawn By:	APH,JD	
Checked By:	MF	
Designed By:	MF	
Approved By:	MF	
Drawn Date:	28.05.2010	

Consultants:	As indicated	@ A1
Civil:	Aurecon	Opus
Structural:	Aurecon	Opus
Mechanical:	Opus	Traffic Design Group
Electrical:	Opus	Jerome Luiten
Fire:	Opus	

Security:	Opus
Communications:	Opus
Traffic:	Traffic Design Group
Landscaping:	Jerome Luiten

FF
f
a
FF
f
a
FF
f
a

Project:
Whangarei Mental Health Inpatient Unit
 Maunu Road, Whangarei
 Northland
 New Zealand

Sheet name:
Elevations (3 of 3)

Discipline: **ARCHITECTURE**
 Status: **Tender**
 No: **A404**
3

Design shown is copyright of FFA Limited