

FFE KEYNOTES:

- Group 1 - Contractor supply and install
- Group 2 - Client supply, contractor install
- Group 3 - Client supply and install

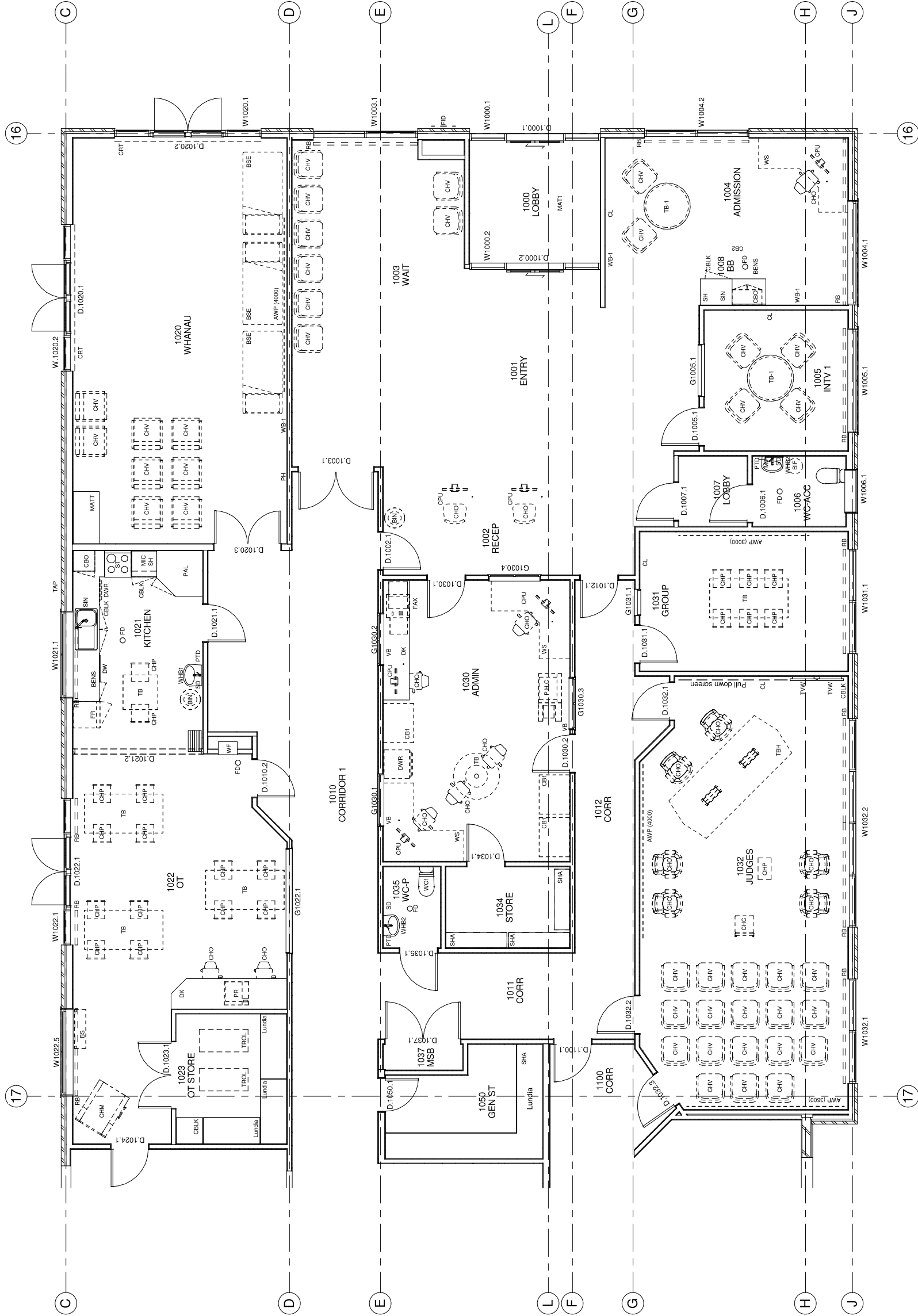
KEY GROUP/ITEM

ATL	1	Angle Poles Lamp	OX	2	Over Head Projector
APV	1	Access Panel Valve (WC)	PAL	1	Pantry - Built in Lockable
BA	3	Bath	PCSS	1	Polycarbonate Shower Screen
BB	3	Bean Bags	PH	3	Photocopier
BED	1	Bed	PHC	3	Printer
BEN	1	Bench - Hospital	PL	3	Plastic Shelf
BENC	1	Bench - Chair	PS	1	Plastic Shelf
BENM	1	Bench - Laminated	PTD	2	Paper Towel Dispenser
BENS	1	Bench - Melteca	RA	1	Rangehood
BEN1	1	Bench - Stainless Steel	REC	3	Reception Counter - Built in
BIF	2	Bin Fixed - Waste	SCA	1	Scanner
BIS	3	Bin - Paper basket	SE	2	Liquid Dispenser
BIS1	3	Bin - Sharps	SE1	1	Strip Floor drain
BISH	2	Bain Marie	SFD	1	Shelving - Fixed
BS	3	Book Shelf	SH	1	Shelving - Adjustable
BSE	3	Bed Settee	SHH	1	Shower Head (Institutional)
BWU	1	Bowing Water Unit	SHL	1	Shower Slips
CB	1	Chair - Office	SHM	1	Shower Slips
CBK	1	Chair - Plastic	SHU	1	Mixer - Shower
CBO	1	Chair - Visitor	SIN	1	Shower Unit
CHL	3	Chair - Dining	SIN1	1	Sink - Cleaner
CHL1	3	Chair - Lounge	SINL	1	Sink - Laundry
CHL2	3	Chair - Passage	SP	1	Slip Resistant
CHL3	3	Chair - Plastic	SP1	1	Slip Resistant
CHV	3	Chair - Visitor	SSD	3	Screen Hung Shelving
CL	3	Clock	SSO	1	Single Socket Outlet
COU	3	Couch	SST	3	Seat (Stackable)
COUB	3	Couch/Bed	ST	2	Stove
CP	3	Computer	ST1	2	Stove
CR	3	Computer	STER	2	Stove
CR1	1	Computer	SWP	1	Shower/WC Partition
CRT	1	Curian - Cubicle	TAP	1	Garden hose tap
CRT-C	1	Curian Track - Cubicle	TBC	3	Table - Dining
DD	2	Deligent Dispenser	TBD	3	Table - Dining
DK	1	Desk - Built in	TBI	3	Table - Dining (4 people)
DR	2	Dryer - Commercial	TBI1	3	Table - Dining (4 people)
DW	2	Dishwasher	TBI2	3	Table - Dining (4 people)
DWL	3	Drawers - Lockable	TBM	1	Table - Meeting
ECO	3	Exam Couch/Pinrh	TMV	1	Thermostatic Mixing Valve
FAP	1	Fire Alarm Panel	TR	1	Towel Rail
FAX	3	Fax Machine	TRR	1	Towel Rail - Recessed
FD	3	Floor Drain	TRH	1	Towel Rail - Holder
FID	3	Fire Inlet Door	TRH-S	1	Towel Rail - Holder - Staff
FIR	3	Fridge	TRL	3	Trolley - Linen
FRE	3	Fridge/Freezer	TROL	3	Trolley - Replaceable
FRU	3	Fridge	TST	3	Toaster - Commercial
GR	2	Grab Rail - Straight	TW	2	Wall Mounted TV
GR-S	1	Grab Rail - Straight	VR	1	Vision
HK	1	Hook - Clothes	VDU	1	VDU Housing
HK-B	1	Hook - Breakaway	VID	3	Video/DVD
IPC	1	IPC Wall Protection	VNTL	1	Ventilation / Extraction
LE	3	Locker	WB-1	1	Whiteboard - Gr. 1
LIP	3	Locker	WB-E3	1	Whiteboard - Electronic - Gr. 3
LO	2	Locker	WB1	1	Whiteboard - Electronic - Gr. 1
MAC	2	Macerator	WB2	1	Whiteboard - Electronic - Gr. 2
MAT1	1	Mat/Rug - Recessed Floor Mat	WB3	1	Whiteboard - Electronic - Gr. 3
MAT2	3	Mat - Non-slip	WB4	1	Whiteboard - Electronic - Gr. 4
MB	3	Mixer Bin	WB5	1	Whiteboard - Electronic - Gr. 5
MIP	1	Mirror - Polycarbonate	WB6	1	Whiteboard - Electronic - Gr. 6
MIS	3	Mirror - Standard	WB7	1	Whiteboard - Electronic - Gr. 7
MO	3	Mobile	WB8	1	Whiteboard - Electronic - Gr. 8

Note:

Bev Bay-1602.1309
1119, 1121, 1008
Sizes varies between these rooms. Confirm on-site during assembly

Refer to electrical & Mechanical DWGS for services requirements



Plan 700
1 : 50

Rev	Description	Date
1	Revision 1	26.05.10
2	For Tender	27.07.10

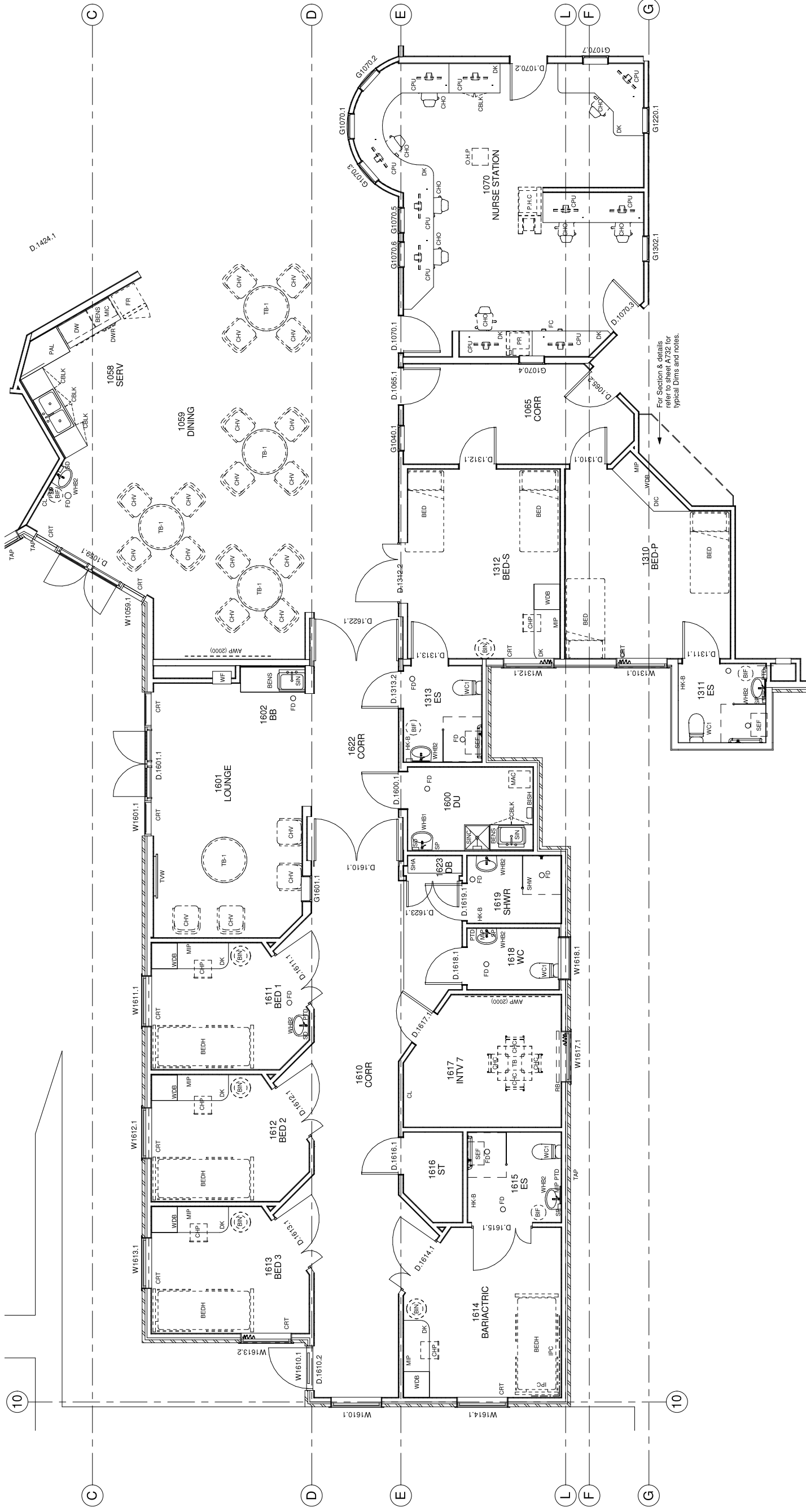
Scale: 1 : 50 @ A1
Drawn By: ARH,JD
Checked By: MF
Designed By: MF
Approved By: MF
Drawn Date: 28.06.2010

Consultants:	Opus
Civil:	Aurecon
Structural:	Aurecon
Mechanical:	Opus
Electrical:	Opus
Fire:	Opus
Security:	Opus
Communications:	Opus
Traffic:	Traffic Design Group
Landscaping:	Jerome Luiten

Project:
Whangarei Mental Health Inpatient Unit
Fitness Fleming Architects Ltd
PO Box 78088
Central Auckland
Design shown is copyright of FFA Limited

Note:
 Bev Bay- 1602,1309
 1119, 1121, 1008
 Sizes varies between
 these rooms. Confirm
 on-site during
 assembly

Refer to electrical &
 Mechanical DWGS for
 services requirements



Plan 702
 1 : 50

Rev	Description	Date
1	Revision 1	26/05/10
2	For Tender	27/07/10

Scale: 1 : 50 @ A1
 Drawn By: ARH,JD
 Checked By: MF
 Designed By: MF
 Approved By: MF
 Drawn Date: 28/05/2010

Consultants:
 Civil: Aurecon
 Structural: Aurecon
 Mechanical: Opus
 Electrical: Opus
 Fire: Opus

Security: Opus
Communications: Opus
Traffic: Traffic Design Group
Landscaping: Jerome Luiten

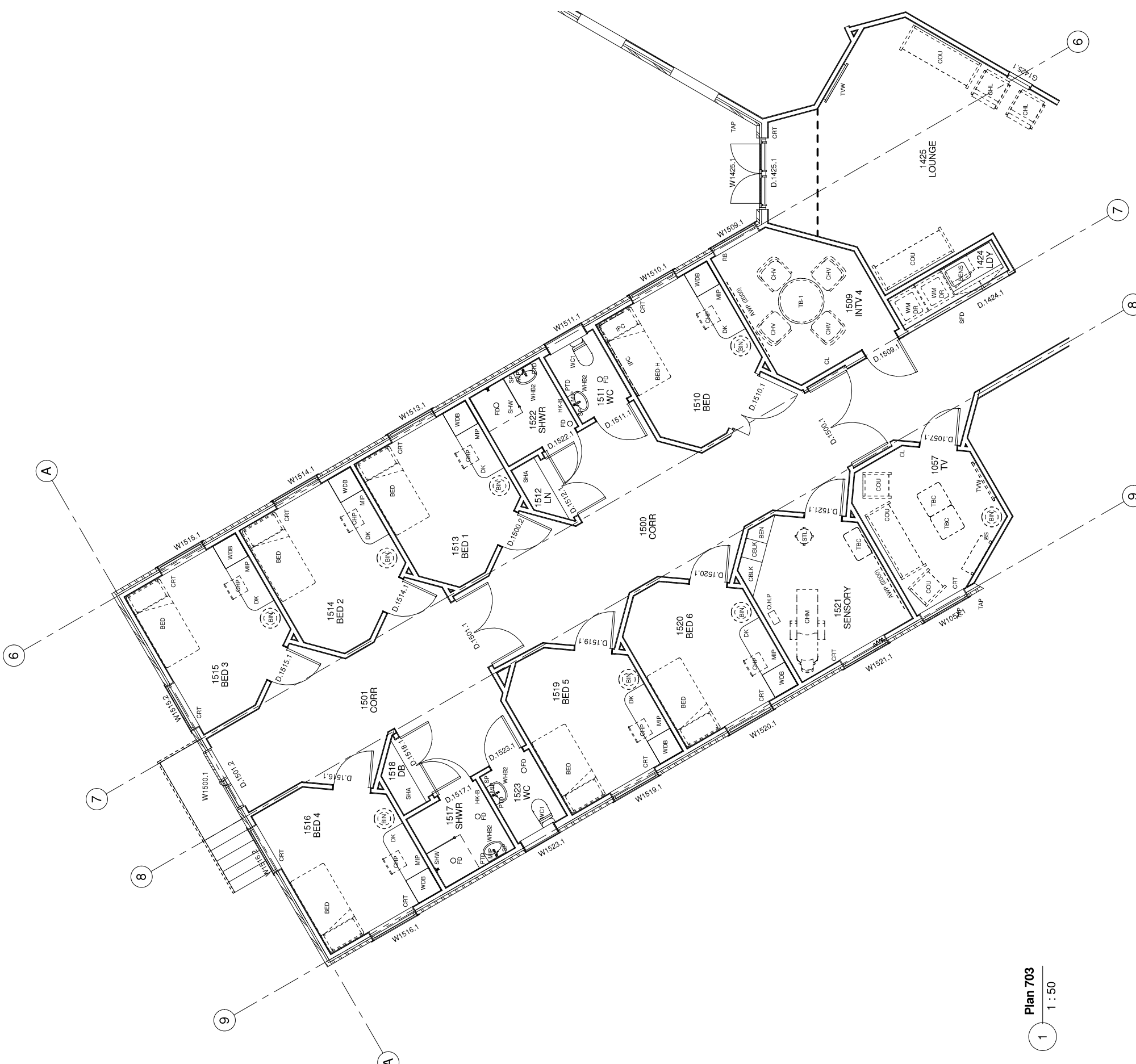
Project:
 Whangarei Mental Health
 Inpatient Unit
 Fitness Fleming Architects Ltd
 PO Box 78068
 Corner of
 Northland
 Auckland
 Design shown is copyright of FFA Limited

Sheet name:
 Fitout Area 3 - Nurse
 Station, Dining & Elderly

Discipline: ARCHITECTURE
 Status: Tender
 No. A703 2

FFE KEYNOTES:

KEY	GROUP/ITEM
Group 1 - Contractor supply and install	
Group 2 - Client supply, contractor install	
Group 3 - Client supply and install	
APL	1 Angle Poise Lamp
APV	1 Access Panel Valve (WC)
APW	1 Acoustic Wall Panel
BA	1 Bean Bag
BB	1 Bean Bag
BBQ	1 Bed
BED	1 Bed
BED-H	1 Bed-Hospital
BENCH	1 Bench - Chair
BENCH-ADJ	1 Bench - Adjustable
BENCH-MULTI	1 Bench - Multi
BENCH-SS	1 Bench - Stainless Steel
BENS	1 Bench
BEN	1 Bench
BIF	2 Bin Fixed - Waste
BIN	3 Bin - Waste paper basket
BIS	1 Bin - Sanitary
BIS-H	1 Bin - Sanitary
BM	1 Bin - Medical
BS	1 Book Shelf
BSE	3 Bed Saittee
BWU	1 Boiling Water Unit
CB1	1 Cupboard Unit
CBK	1 Cupboard - Linear
CBK-O	1 Cupboard - Overhead
CHD	3 Chair - Dining
CHL	3 Chair - Lounge
CHM	3 Chair - Massage
CHO	3 Chair - Office
CHP	3 Chair - Plastic
CHV	3 Chair - Visitor
CL	3 Clock
COU	3 Couch
COUB	3 Couch Bed
CPU	3 Computer
CR	3 Curtains
CRT	3 Curtain - Cubicle
CRT-C	1 Curtain Track - Cubicle
CRT-C	1 Curtain Track - Cubicle
DD	2 Detergent Dispenser
DD	2 Desk - Built in
DR	2 Dryer - Commercial
DS	2 Dryer Sale
DW	2 Dishwasher
DWL	1 Drawers - Under
DWR	3 Drawers - Lockable
ECO	3 Exam Couch/Plinth
FAP	1 Fire Alarm Panel
FAX	3 Fax Machine
FC	3 Filing Cabinet
FD	3 Floor Drain
FID	1 Fire Exit Door
FR	3 Fridge
FRE	3 Fridge/Freezer
FRU	3 Fridge - Underbench
GD	2 Glove Dispenser
GR	1 Grab Rail (NZS4121)
HK-S	1 Hook - Straight
HK-B	1 Hook - Breakaway
IPC	1 IPC Wall Protection
LB	3 Laundry Basket
LMP	2 Panel Lamson
LO	3 Locker
LO	3 Locker
MAT1	1 Mat - Non-slip
MAT2	1 Mat - Recessed Floor Mat
MATT	3 Roll Up Mattress
MB	3 Max Bins
MIC	3 Microwave
MIP	1 Mirror - Polycarbonate
MIS	1 Mirror - Polycarbonate
MO	3 File Drawer - UB Unit (Mobile)
OHP	2 Over Head Projector
PA	1 Oxygen Bottle
PAL	1 Polyacrylate Shower Screen
PCSS	1 Photocopier
PH	3 Telephone
PHC	3 Photocopier
PR	3 Printer
PRL	3 Printer - Label
PS	1 Plastic Shelf
PTD	1 Polyacrylate Shower Screen
RA	1 Reception Counter - Built in
REC	3 Scanner
SCA	3 Scanner
SD	2 Liquid Soap Dispenser
SEF	1 Seat - Fold Down
SFD	1 Slip floor drain
SH	1 Shelving - Adjustable
SHA	1 Shelving - Fixed
SHH	1 Shower Head (Institutional)
SHSL	1 Shower Slide
SHL	1 Shelving - Lunda
SHW	1 Shower
SHW-U	1 Shower Unit
SIN	1 Sink
SINCL	1 Sink - Cleaner
SINL	1 Sink - Laundry
SLUICE	1 Sluice Sink
SP	1 Sound Proofing
SPD	1 Single Door Partition
SSH	3 Single Hanging Shelving
SSO	3 Single Socket Outlet
SST	2 Seat (Stackable)
ST	2 Stove
STL	3 Stool
STER	2 Stereo - Wired to Stereo/WC Partition
SWP	1 Shower/WC Partition
TAP	1 Table - Coffee
TBC	3 Table - Dining
TBH	3 Table - Heavy (4 people)
TBI	3 Table - Interview
TBL	3 Table - Interview
TBW	3 Thermostatic Mixing Valve
TW	1 Access Panel
TR	1 Towel Rail
TR-R	1 Towel Rail - Recessed
TRH	2 Toilet Roll Holder - Patient
TRH-S	1 Toilet Roll Holder - Staff
TRJ	1 Trolley - Replacable
TRJL	3 Trolley - Replacable
TST	3 Toaster - Commercial
TVW	2 Wall Mounted TV
UR	1 Urinal
VB	1 Venetian Blinds
VDU	1 VDU Housing
VDU	1 VDU Housing
VNTL	1 Ventilation / Extraction
WB-E	1 Whiteboard - Gr. 1
WB-E	1 Whiteboard - Electronic; Gr. 3
WC1	1 Toilet - Recessed Cistern
WC2	1 Toilet - Stainless Steel
WC3	1 Toilet - Stainless Steel
WC4	1 Toilet - Stainless Steel
WB1	1 Wash Hand Basin Integra
WB2	1 Wash Hand Basin S.S
WB3	1 Wash Hand Basin S.S
WB6	1 Hair Dressers Wash Basin
WM	2 Washing Machine - Commercial
WMS	1 Workstation Screen
WTR	1 Cold Water Unit - Underbench



Plan 703
1 : 50

Rev	Description	Date
1	Revision 1	28.05.10
2	For Tender	27.07.10

Scale:	1 : 50
Drawn By:	ARH,JD
Checked By:	MF
Designed By:	MF
Approved By:	MF
Drawn Date:	28/05/2010

Consultants:	Opus
Civil:	Aurecon
Structural:	Aurecon
Mechanical:	Opus
Electrical:	Opus
Fire:	Opus

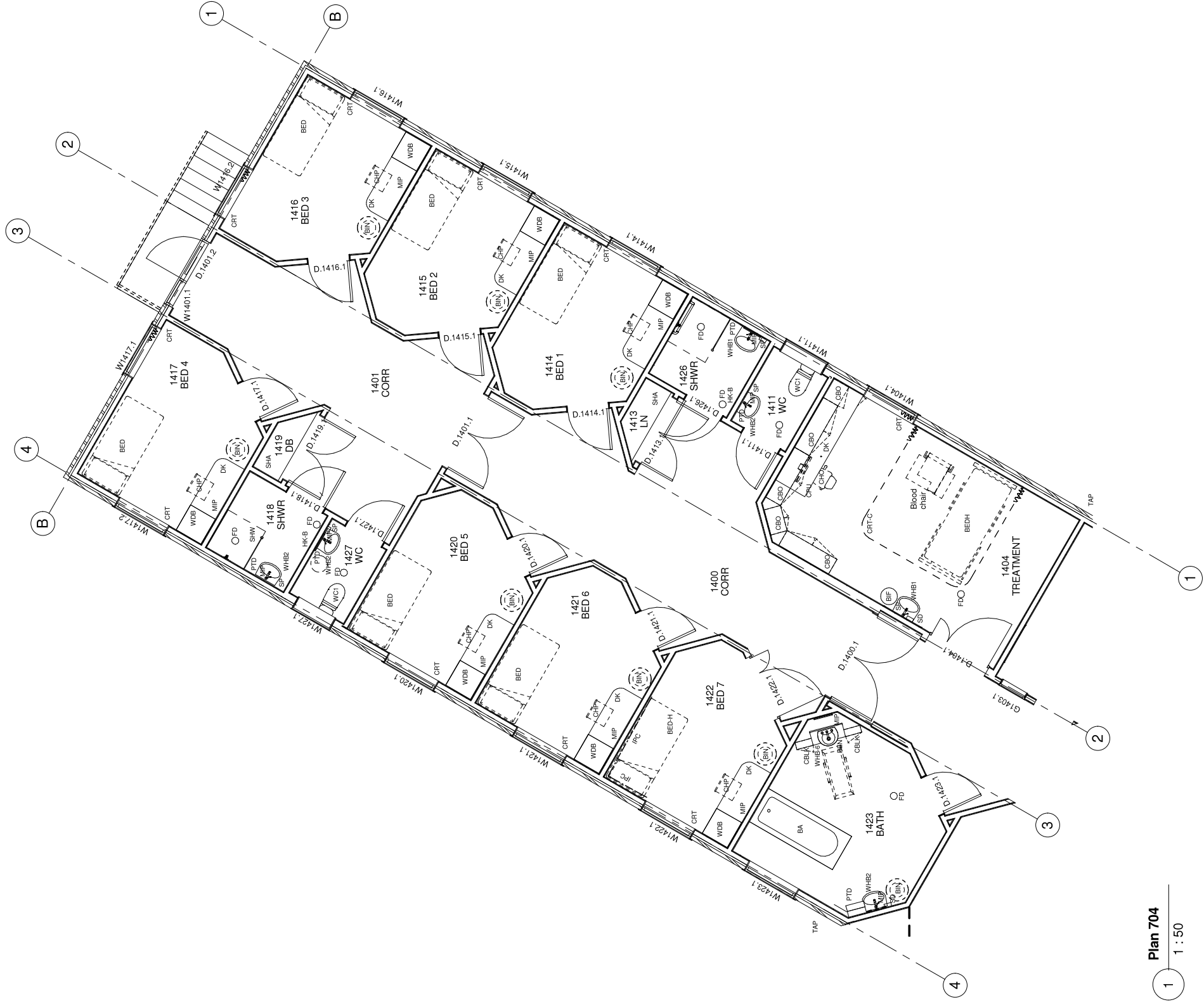
Security:	Opus
Communications:	Opus
Traffic:	Traffic Design Group
Landscaping:	Jerome Luitien

FFE KEYNOTES:

- Group 1 - Contractor supply and install
- Group 2 - Client supply, contractor install
- Group 3 - Client supply and install

KEY GROUP ITEM

APL	1	Angle Poise Lamp	OHP	2	Over Head Projector
AWP	1	Access Wall Panel	PAL	1	Acoustic Wall Panel
BA	1	Bath	PCSS	1	Polycarbonate Shower Screen
BB	3	Bean Bags	PH	3	Telephone
BBQ	1	BBQ	PHC	3	Photocopier
BED	1	Bed	PR	3	Printer
BED-H	3	Bed-Hospital	PTD	3	Printer - Label
BED-C	1	Bed - Chair	RA	2	Rangehood
BEN	1	Bench - Laminated	REC	1	Reception Counter - Built in
BENM	1	Bench - Melteca	SCA	1	Scanner
BENS	1	Bench - Stainless Steel	SD	2	Liquid Soap Dispenser
BEN	1	Bench	SE	1	Seat - Fold Down
BIF	2	Bin Fixed - Waste	SEB	1	Seat - Folding
BIN	3	Bin - Waste paper basket	SH	1	Shelving
BIS	3	Bin - Storage	SHH	1	Shelving - Adjustable
BISH	3	Bin - Storage	SHI	1	Shelving - Fixed
BM	3	Bam Marie	SHL	1	Shower Head (Institutional)
BSE	3	Bed Settee	SHU	1	Shower Slide
BWU	1	Boiling Water Unit	SIN	1	Sink
CB1	3	Control Unit	SINCL	1	Sink - Cleaner
CB2	3	Control Unit	SINL	1	Sink - Laundry
CB3	3	Control Unit	SLUICE	1	Sluice Sink
CB4	3	Control Unit	SP	1	Screen - Folding
CB5	3	Control Unit	SPD	1	Screen - Dis Built in
CB6	3	Control Unit	SSH	3	Screen Hung Shelving
CB7	3	Control Unit	SSO	3	Screen Hung Shelving
CB8	3	Control Unit	ST	1	Single Socket Outlet
CB9	3	Control Unit	ST	2	Seat (Stackable)
CB10	3	Control Unit	ST	3	Stove
CB11	3	Control Unit	STER	2	Stool
CB12	3	Control Unit	SWP	1	Shower/WC Partition
CB13	3	Control Unit	TAP	1	Tap
CB14	3	Control Unit	TBC	3	Table - Dining
CB15	3	Control Unit	TBD	3	Table - Dining
CB16	3	Control Unit	TBH	3	Table - Heavy (4 people)
CB17	3	Control Unit	TBI	3	Table - Dining
CB18	3	Control Unit	TBM	3	Table - Meeting
CB19	3	Control Unit	TBN	3	Table - Meeting
CB20	3	Control Unit	TR	1	Towel Rail
CB21	3	Control Unit	TRR	1	Towel Rail - Recessed
CB22	3	Control Unit	TRH	2	Toilet Roll Holder - Patent
CB23	3	Control Unit	TRL	1	Trolley - Linen
CB24	3	Control Unit	TRM	3	Trolley - Linen
CB25	3	Control Unit	TRP	3	Trolley - Replaceable
CB26	3	Control Unit	TST	3	Toaster - Commercial
CB27	3	Control Unit	TW	2	Wall Mounted TV
CB28	3	Control Unit	UR	1	Urinal
CB29	3	Control Unit	VB	1	Veneer Blinds
CB30	3	Control Unit	VD	1	Video/DVD
CB31	3	Control Unit	VID	3	Video/DVD
CB32	3	Control Unit	VNTL	1	Ventilation / Extraction
CB33	3	Control Unit	WB-1	1	Whiteboard - Gr. 1
CB34	3	Control Unit	WB-E3	3	Whiteboard - Electronic: Gr. 3
CB35	3	Control Unit	WC1	1	Toilet - Recessed Cistern
CB36	3	Control Unit	WC2	1	Toilet - Stainless Steel
CB37	3	Control Unit	WDB	1	Wash Hand Basin
CB38	3	Control Unit	WFB	1	Wash Hand Basin
CB39	3	Control Unit	WFB1	1	Wash Hand Basin
CB40	3	Control Unit	WFB2	1	Wash Hand Basin
CB41	3	Control Unit	WFB3	1	Wash Hand Basin
CB42	3	Control Unit	WFB6	1	Wash Hand Basin
CB43	3	Control Unit	WFB7	1	Wash Hand Basin
CB44	3	Control Unit	WFB8	1	Wash Hand Basin
CB45	3	Control Unit	WFB9	1	Wash Hand Basin
CB46	3	Control Unit	WFB10	1	Wash Hand Basin
CB47	3	Control Unit	WFB11	1	Wash Hand Basin
CB48	3	Control Unit	WFB12	1	Wash Hand Basin
CB49	3	Control Unit	WFB13	1	Wash Hand Basin
CB50	3	Control Unit	WFB14	1	Wash Hand Basin
CB51	3	Control Unit	WFB15	1	Wash Hand Basin
CB52	3	Control Unit	WFB16	1	Wash Hand Basin
CB53	3	Control Unit	WFB17	1	Wash Hand Basin
CB54	3	Control Unit	WFB18	1	Wash Hand Basin
CB55	3	Control Unit	WFB19	1	Wash Hand Basin
CB56	3	Control Unit	WFB20	1	Wash Hand Basin
CB57	3	Control Unit	WFB21	1	Wash Hand Basin
CB58	3	Control Unit	WFB22	1	Wash Hand Basin
CB59	3	Control Unit	WFB23	1	Wash Hand Basin
CB60	3	Control Unit	WFB24	1	Wash Hand Basin
CB61	3	Control Unit	WFB25	1	Wash Hand Basin
CB62	3	Control Unit	WFB26	1	Wash Hand Basin
CB63	3	Control Unit	WFB27	1	Wash Hand Basin
CB64	3	Control Unit	WFB28	1	Wash Hand Basin
CB65	3	Control Unit	WFB29	1	Wash Hand Basin
CB66	3	Control Unit	WFB30	1	Wash Hand Basin
CB67	3	Control Unit	WFB31	1	Wash Hand Basin
CB68	3	Control Unit	WFB32	1	Wash Hand Basin
CB69	3	Control Unit	WFB33	1	Wash Hand Basin
CB70	3	Control Unit	WFB34	1	Wash Hand Basin
CB71	3	Control Unit	WFB35	1	Wash Hand Basin
CB72	3	Control Unit	WFB36	1	Wash Hand Basin
CB73	3	Control Unit	WFB37	1	Wash Hand Basin
CB74	3	Control Unit	WFB38	1	Wash Hand Basin
CB75	3	Control Unit	WFB39	1	Wash Hand Basin
CB76	3	Control Unit	WFB40	1	Wash Hand Basin
CB77	3	Control Unit	WFB41	1	Wash Hand Basin
CB78	3	Control Unit	WFB42	1	Wash Hand Basin
CB79	3	Control Unit	WFB43	1	Wash Hand Basin
CB80	3	Control Unit	WFB44	1	Wash Hand Basin
CB81	3	Control Unit	WFB45	1	Wash Hand Basin
CB82	3	Control Unit	WFB46	1	Wash Hand Basin
CB83	3	Control Unit	WFB47	1	Wash Hand Basin
CB84	3	Control Unit	WFB48	1	Wash Hand Basin
CB85	3	Control Unit	WFB49	1	Wash Hand Basin
CB86	3	Control Unit	WFB50	1	Wash Hand Basin
CB87	3	Control Unit	WFB51	1	Wash Hand Basin
CB88	3	Control Unit	WFB52	1	Wash Hand Basin
CB89	3	Control Unit	WFB53	1	Wash Hand Basin
CB90	3	Control Unit	WFB54	1	Wash Hand Basin
CB91	3	Control Unit	WFB55	1	Wash Hand Basin
CB92	3	Control Unit	WFB56	1	Wash Hand Basin
CB93	3	Control Unit	WFB57	1	Wash Hand Basin
CB94	3	Control Unit	WFB58	1	Wash Hand Basin
CB95	3	Control Unit	WFB59	1	Wash Hand Basin
CB96	3	Control Unit	WFB60	1	Wash Hand Basin
CB97	3	Control Unit	WFB61	1	Wash Hand Basin
CB98	3	Control Unit	WFB62	1	Wash Hand Basin
CB99	3	Control Unit	WFB63	1	Wash Hand Basin
CB100	3	Control Unit	WFB64	1	Wash Hand Basin



Plan 704
1 : 50

Rev	Description	Date
1	Revision 1	26.05.10
2	For Tender	27.07.10

Scale: 1 : 50 @ A1
 Drawn By: ARH,JD
 Checked By: MF
 Designed By: MF
 Approved By: MF
 Drawn Date: 28/02/2010

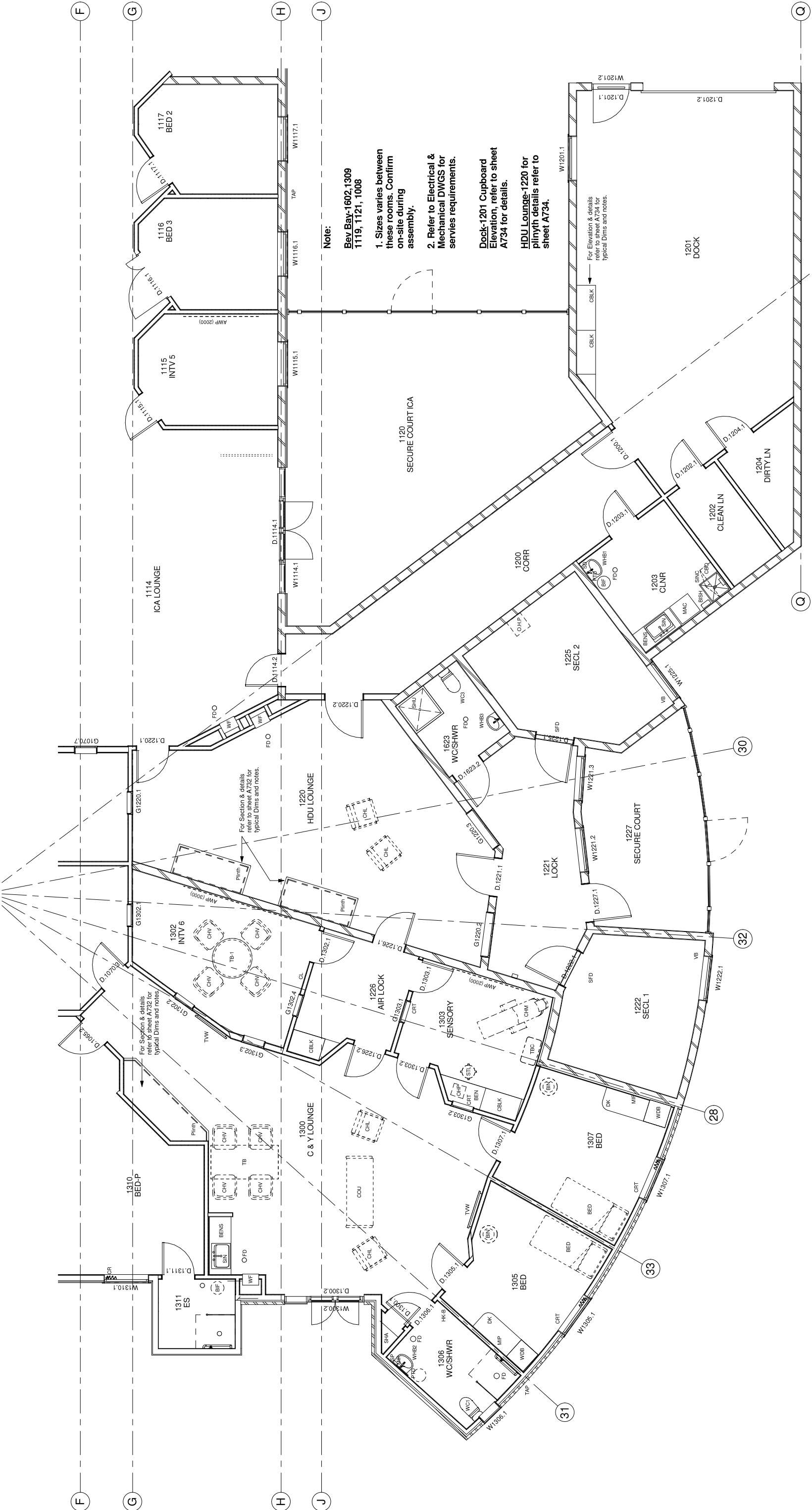
Consultants:
 Civil: Aurecon
 Structural: Aurecon
 Mechanical: Opus
 Electrical: Opus
 Fire: Opus

Security: Opus
Communications: Opus
Traffic: Traffic Design Group
Landscaping: Jerome Luiten

Project:
Whangarei Mental Health Inpatient Unit
 Fitness Fleming Architects Ltd
 PO Box 78068
 Central Business District
 Auckland
 New Zealand

Sheet name:
Fitout Area 5 - East Wing

Discipline: ARCHITECTURE
 Status: Tender
 No. A705 2



Note:
Bev Bay-1602,1309
1119, 1121, 1008

- Sizes varies between these rooms. Confirm on-site during assembly.
- Refer to Electrical & Mechanical DWGS for services requirements.

Dock-1201 Cupboard
Elevation, refer to sheet A734 for details.

HDU Lounge-1220 for
plynth details refer to sheet A734.

Plan 705
 1 : 50

Rev	Description	Date
1	Revision 1	28.05.10
2	For Tender	27.07.10

Scale: 1 : 50 @ A1

Drawn By: ARH,JD
 Checked By: MF
 Designed By: MF
 Approved By: MF
 Drawn Date: 28/05/2010

Consultants:

Civil: Aurecon
Structural: Aurecon
Mechanical: Opus
Electrical: Opus
Fire: Opus

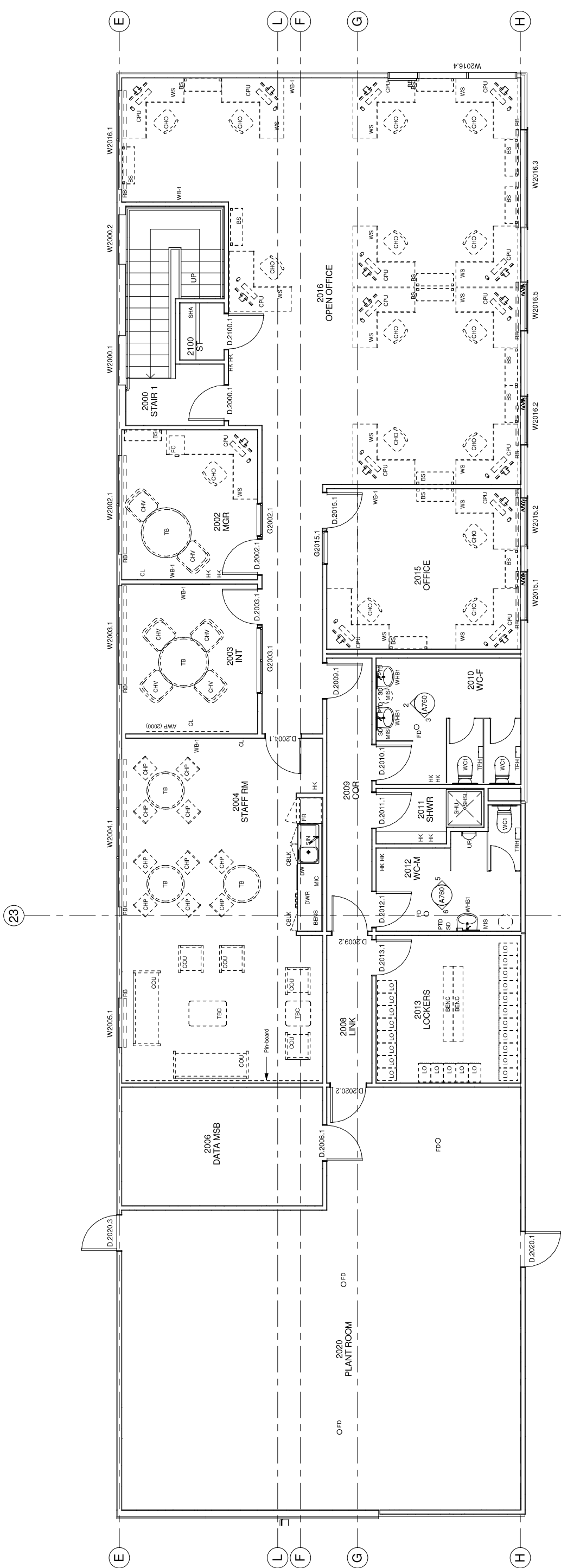
Security: Opus
Communications: Opus
Traffic: Traffic Design Group
Landscaping: Jerome Luiten

Project:
 Whangarei Mental Health
 Inpatient Unit

Fitness Fleming Architects Ltd
 PO Box 78088
 Corner of
 Northland
 Auckland
 Design shown is copyright of FFA Limited

Sheet name:
 Fitout Area 6 - C&Y,
 Secure & Dock

Discipline: ARCHITECTURE
Status: Tender
No.: A706 2



Plan 706
1 : 50

Rev	Description	Date
1	Revision 1	26.05.10
2	For Tender	27.07.10

Scale:	1 : 50	@ A1
Drawn By:	ARH,JD	
Checked By:	MF	
Designed By:	MF	
Approved By:	MF	
Drawn Date:	26/05/2010	

Consultants:	Civil:	Aurecon	Security:	Opus
	Structural:	Aurecon	Communications:	Opus
	Mechanical:	Opus	Traffic:	Traffic Design Group
	Electrical:	Opus	Landscaping:	Jerome Luiten
	Fire:	Opus		

f f a
Fitness Fleming Architects Ltd
 PO Box 78068
 City Centre
 Auckland
 Design shown is copyright of FFA Limited

Project:
 Whangarei Mental Health
 Inpatient Unit
 Mairua Road, Whangarei
 Northland
 New Zealand

Sheet name:
 Fitout Area 7 - Level 1
 Offices & Plant

Discipline: ARCHITECTURE
Status: Tender
No.: A707 2