



Welcome to the second issue of the Whangarei Hospital Redevelopment Newsletter. This edition looks at the design of the new mental health unit to date and preparation work required on the site.

Whangarei Hospital Stage 1 - Redevelopment to date

Design development of the new mental health inpatient unit continues with the mental health user group working closely with the health planner and architect (Fitness Fleming) and project manager (RDT).

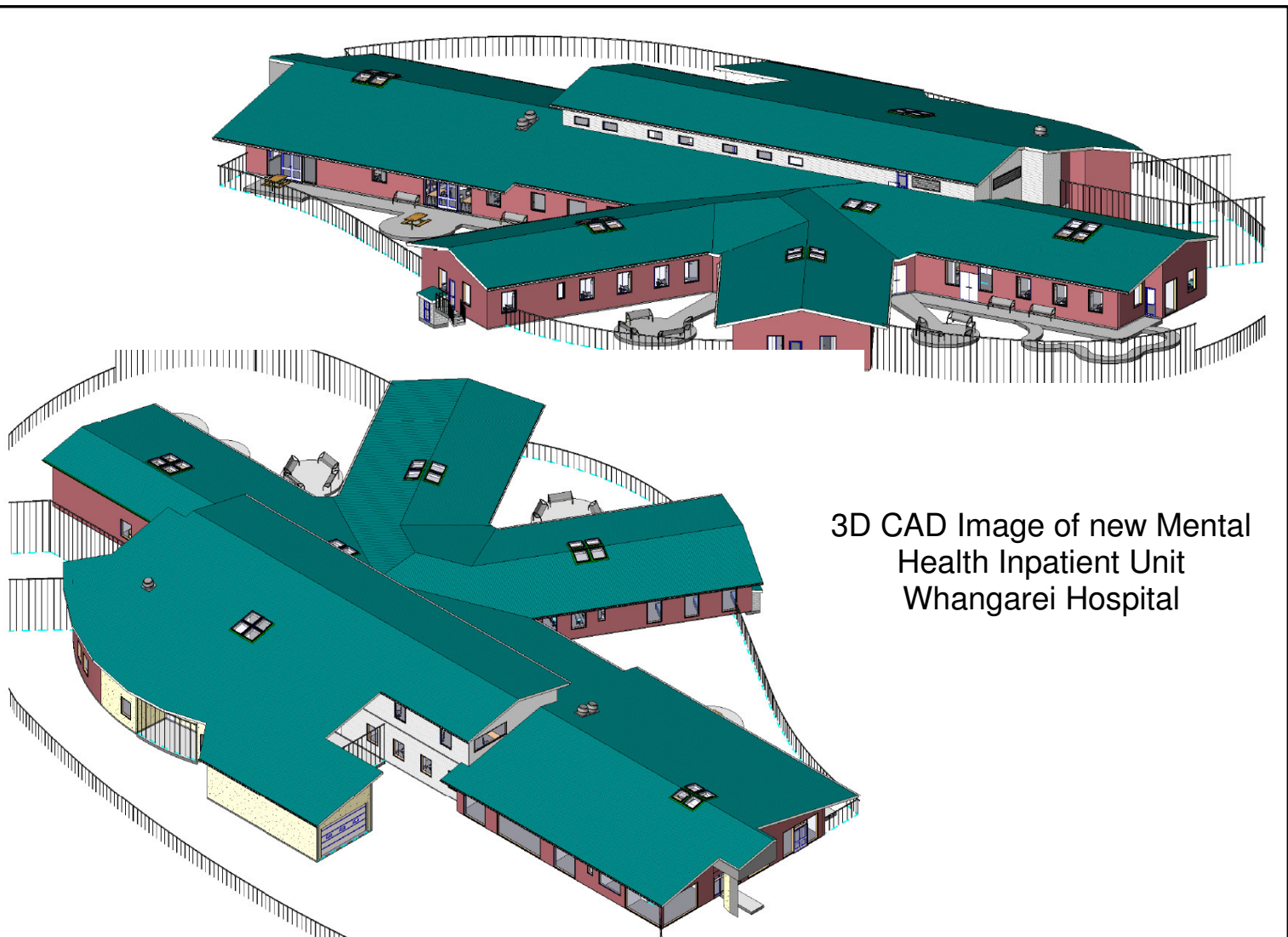
The user group and lead consultants have now completed the second design phase - preliminary design - which has been approved by the Northland DHB Board. The next step for the user group and project design team is to submit the developed design to the Northland DHB Board for approval. The aim is to complete this phase of the project by mid May.

Developed design is where the scope of each component in the design is clearly defined and coordinated. This may

involve production of detailed information including sketch details of all significant componentry and their interrelationships. In general, developed design provides sufficient information for the client/user to clearly understand the aesthetics and functionality of the building, internal spaces and facilities.

Project Timeline

- | | |
|--------------------------|----------------|
| • Preliminary Design | Completed |
| • Developed Design | May 2010 |
| • Detailed Design | July 2010 |
| • Construction Tender | August 2010 |
| • Construction starts | September 2010 |
| • Construction completed | September 2011 |



3D CAD Image of new Mental Health Inpatient Unit Whangarei Hospital



Preparation works on the new Mental Health Inpatient Unit site

Site preparation work is in progress to make space available for the new mental health inpatient unit.

The Community Mental Health South team have relocated from Norton House and Whitiara, to the Michael Hill Building in the city centre.

Plans are underway for the Community Mental Health North team currently in Norton House, plus the Alcohol and Drug team currently in Norfolk Villa, to all move to Puriri House in Kamo.

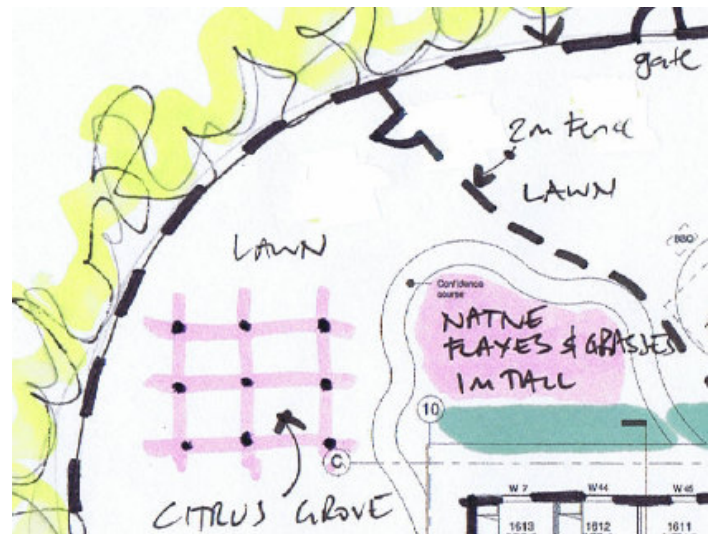
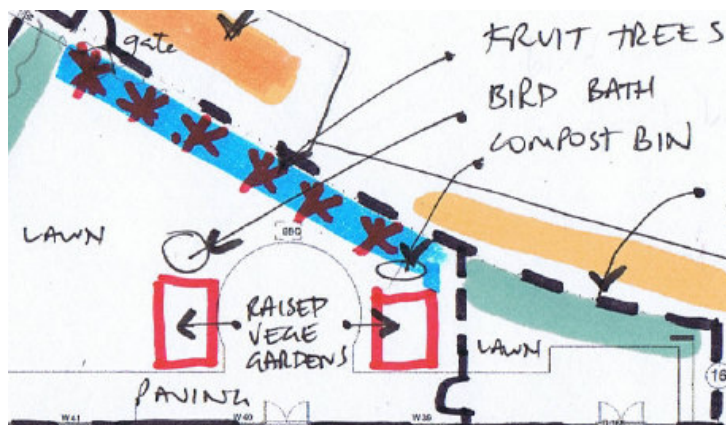
Then most of the buildings in the Norton House area will be relocated to other sites across Whangarei Hospital campus. Norton House will then be demolished, making way for the new build to begin.

Already some clearing has taken place, including the removal of trees, sheds and the old villa (Whitiara). The removed trees will be used for carvings including the creation of pou (carved posts) for the new Mental Health Inpatient Unit.



Landscape Design for Mental Health Inpatient Unit

An additional user group has recently been formed to help the project team to design the landscaping concept around the new Unit. The group consists of clinical staff, management and the NDHB Kaumatua. Working with a landscape designer, the aim is to create a design unique to the specific soil, sun and patient requirements.



It is planned to include a vegetable garden and citrus grove plus many other native plants adding various textures and depth to the garden.

For further information on the Whangarei Hospital Redevelopment please email: project.office@northlanddhb.org.nz